

Specialty interior products are needed to maintain a safe and healthy environment for patients and staff in behavioral health facilities. Certain product characteristics, like ligature resistance, must be meticulously and deliberately chosen when designing or renovating a high-risk behavioral health facility. Many of our Acrovyn handrails, pictured below, have been modified to promote the safety of patients, staff and visitors in these unique facilities, all while remaining aesthetically pleasing and protective to interior surfaces.

Visit [www.acrovyn.com/handrails](http://www.acrovyn.com/handrails) for more product information or contact Construction Specialties at 800.233.8493.



HRB-4CCMN / HRB-4CCMHLN



HRB-35CMN



HRB-20CMN / HRB-20CMHLN



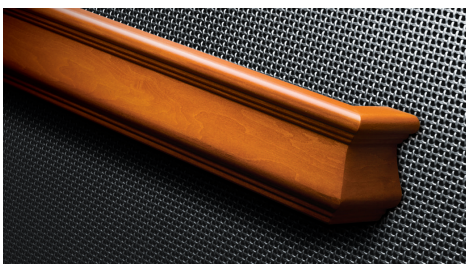
HRBW-20CMN



HRW-35CM



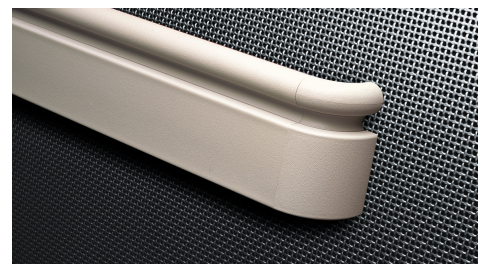
HRW-20CM / HRW-20VCM  
HRW-20SCM



HRW-45CM / HRW-45VCM  
HRW-45SCM



AW-10CCM / AW-10CVBCM



HRB-10CCMN



HRBW-10CCMN



HRW-10CCM / HRW-10CGCM / HRW-10CVCM

*Our Acrovyn Ligature Resistant handrails are modified to promote the safety of patients, staff, and visitors in behavioral health facilities and to reduce the chances of self-inflicted harm through ligature. However, Construction Specialties, Inc. cannot guarantee that this product will eliminate all possibility of harm sustained as a result of ligature.*